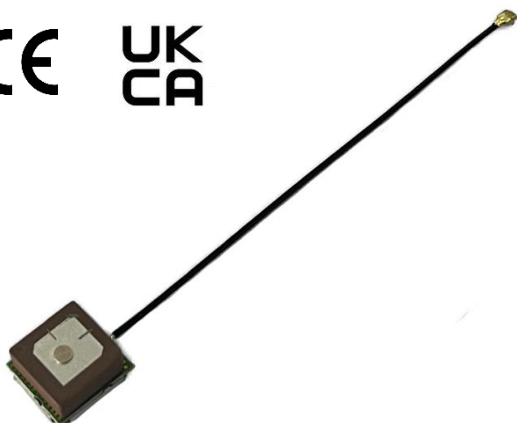


GNSS Passive Patch Antenna

GPSGB13 L1 Band



Features & Applications:

- Cable: 100mm with U.FL compatible connector
- Compact size: 15 x 14 x 8.65mm
- GNSS Applications
- GPS, Beidou, Glonass

Electrical Specifications

Antenna type	Nominal Impedance	Polarization	Radiation pattern
Patch	50Ω	RHCP	Directional
Port	Frequency (MHz)	1565 – 1605 MHz	
Port 1	Return Loss	< -15dB @1575 MHz	
	Peak Gain (dBic)	2	
	Avg. Efficiency (%)	60	

Mechanical Specifications

Orderable PN: GPSGB13

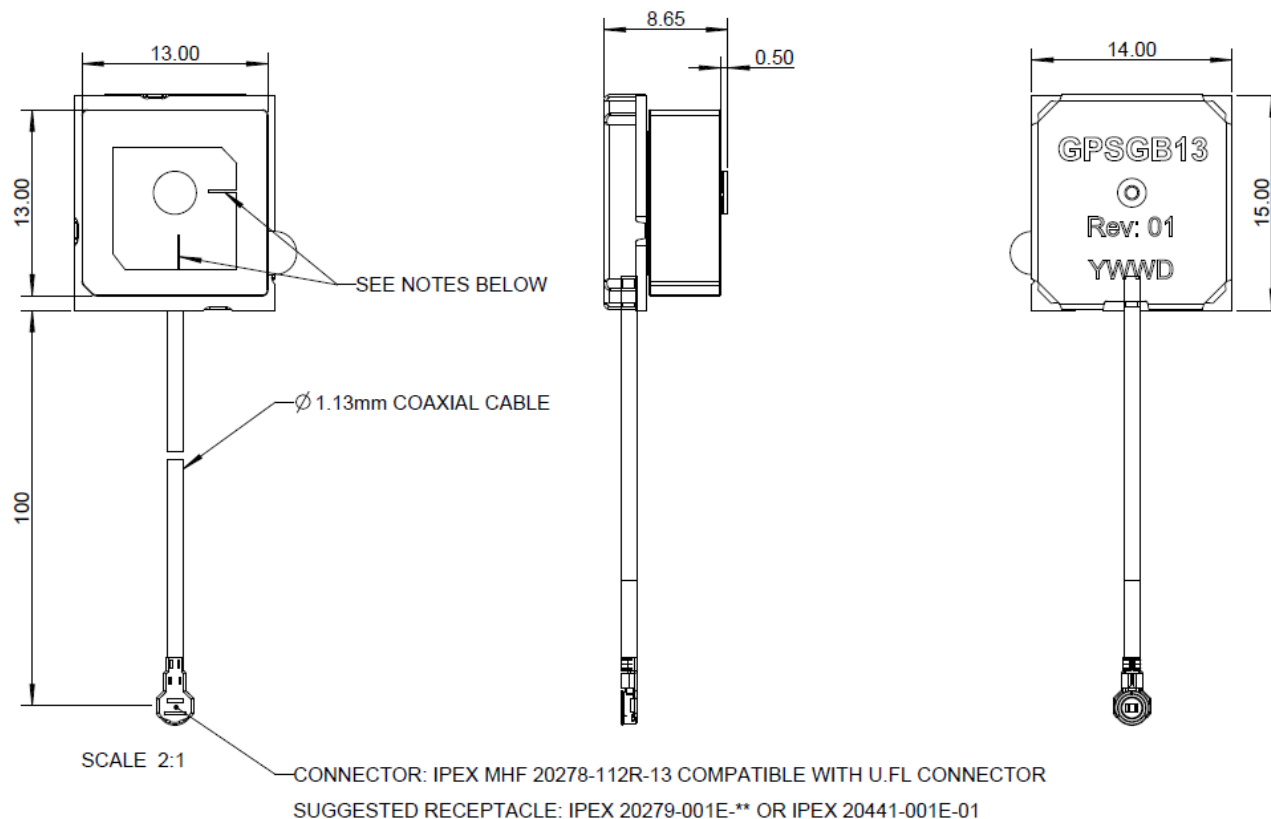
Dimension (exc. Cable)	Weight	Connector Type	Fixing System	Cable length	Operating/Storage temp
15mm*14mm*8.65mm	4.3gram	IPEX	Adhesive 3M R16	100mm	-40°C to +85°C

Notes:

1. Measured on 70x70mm ground plane

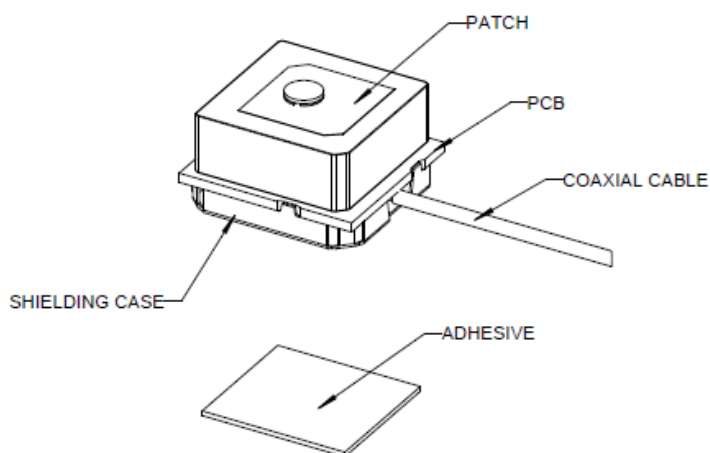
Mechanical Drawing

GPSGB13



NOTES

1. THERE MIGHT BE ONE OR MORE TUNING SLOTS ON THE CERAMIC PATCH, AND NOT EVERY CERAMIC PATCH HAS THE TUNING SLOT(S).
2. TUNING SLOT POSITIONS AND DIMENSIONS MIGHT VARY PART BY PART.

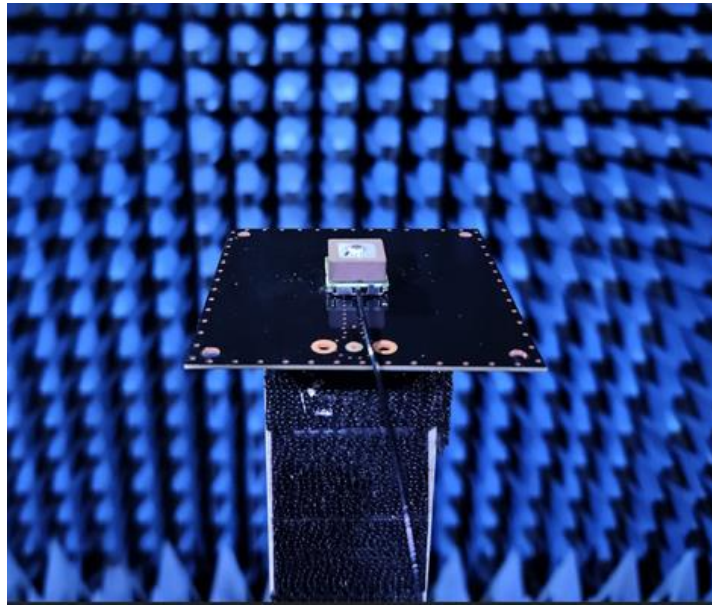


Adhesive tape material: 3M
 R16, T=0.4mm, it's not
 assembled, but included in the
 sales package.

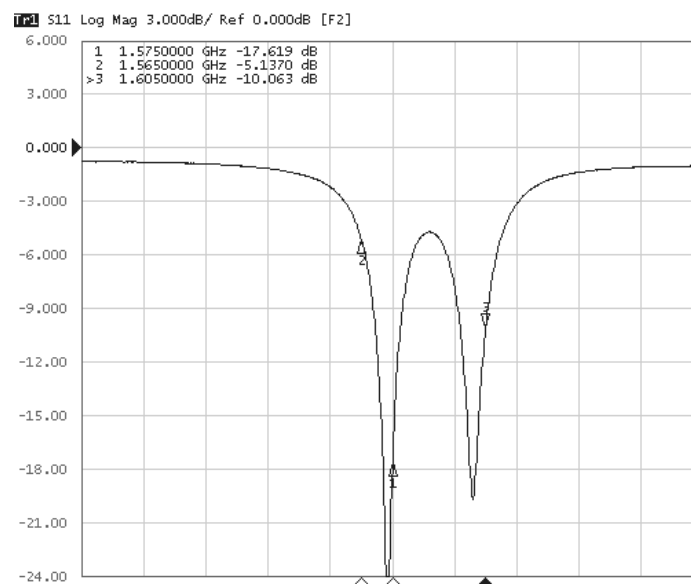
Test Setup

GPSGB13

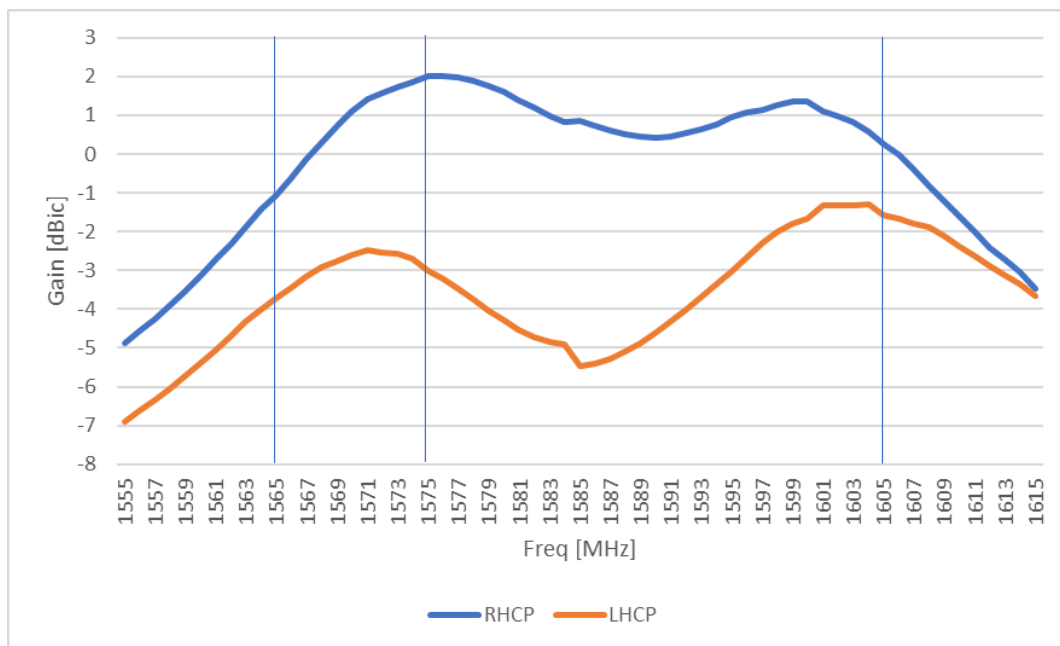
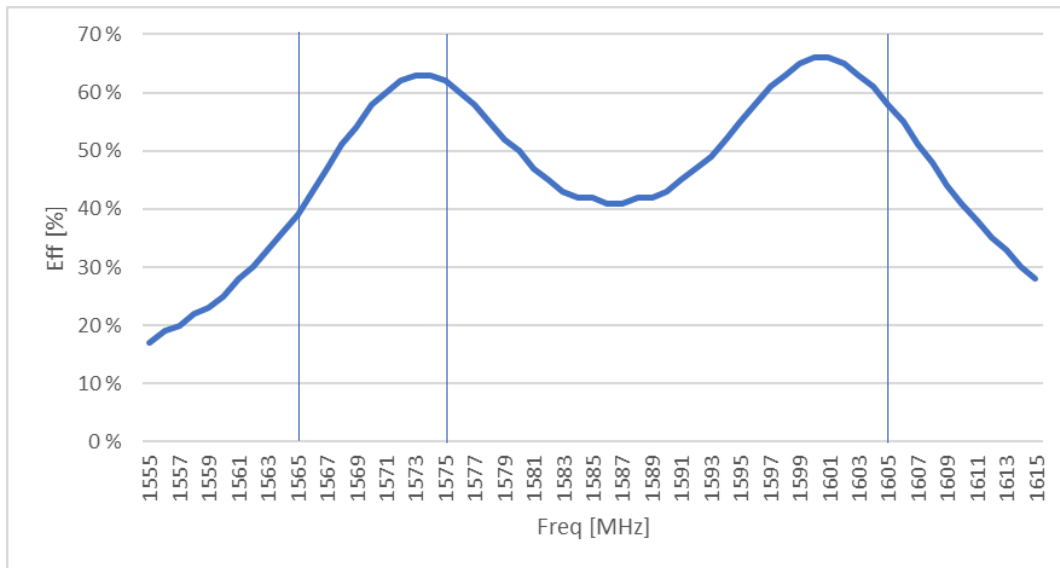
Tested on 70 x 70mm Ground plane



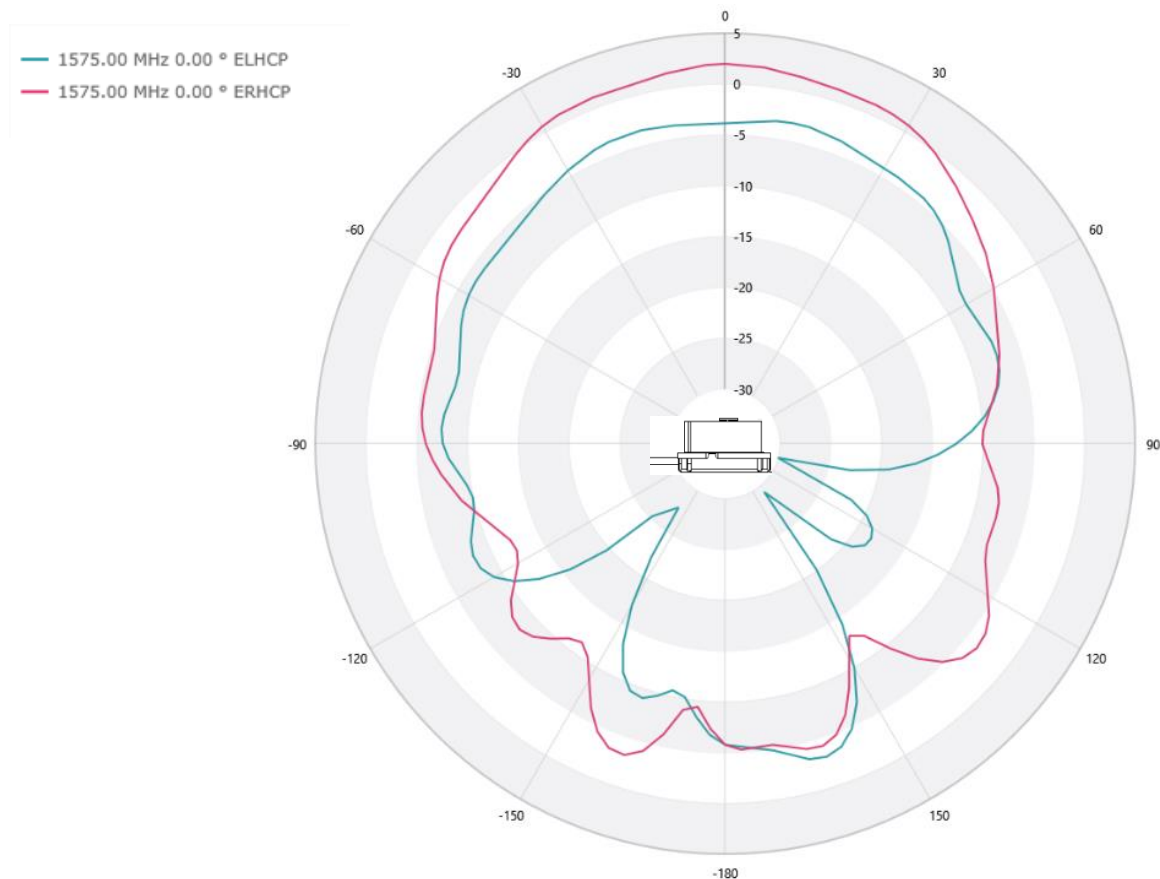
Return Loss



Efficiency and Peak Gain



Radiation Pattern



Package

Antennas packed in C-tray and carton box

48pcs/tray, tray size: 365mm*275mm;

720pcs/carton box, Carton box size: 285mm*375mm*200mm.

For More Information:

Americas - antennas.us@pulseelectronics.com | Europe - antennas.eu@pulseelectronics.com | Asia - antennas.as@pulseelectronics.com | Questions? +1-800-ANTENNA
Performance warranty of products offered on this data sheet is limited to the parameters specified. Data is subject to change without notice. Other brand and product names mentioned herein may be trademarks or registered trademarks of their respective owners. © Copyright , 2020. Pulse Electronics, Inc. All rights reserved.
Company address: Pulse Electronics, a YAGEO Company, 15255 Innovation Drive, Suite #100, San Diego, CA 92128

'YAGEO Corporation and its affiliates do not recommend the use of commercial, automotive, and/or COTS grade products for high reliability applications or manned space flight.'