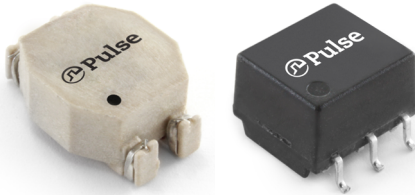


Single Pair Ethernet Surface Mount 2-Wire Common Mode Chokes

Suited for 10Base-T1 ethernet LAN and WAN Applications



Features and Benefits:

- Designed for High current STPE 10Base-T1 links
- Compact Industry standard Size
- Filters common mode noise for EMI reduction
- Common mode attenuation from 100 KHz to 1 GHz
- RoHS peak reflow solder temperature <260°C

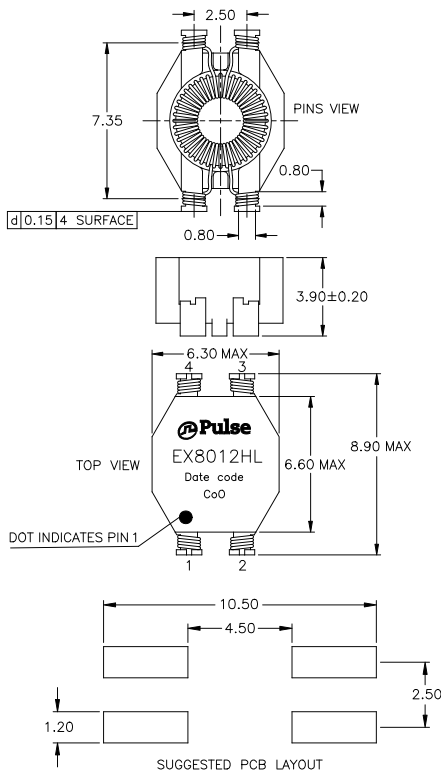
Electrical Specifications @ 25°C

Part Number ¹	No. of Lines	Primary Inductance OCL ($\mu\text{H} +50\% / -30\%$)	L_L (μH TYP)	DCR (Ω MAX)	Current Rating (mA dc)	Isolation (Vrms)	Primary Application
EX8011HLT	2	470	0.20	0.30	800	500	10Base-T1 Long haul
EX8012HLT	2	1,000	0.25	0.30	700	500	10Base-T1 Short haul
EX8013HLT	2	470	0.20	0.30	800	500	10Base-T1 Long haul
EX8014HLT	2	1,000	0.25	0.30	700	500	10Base-T1 Short haul

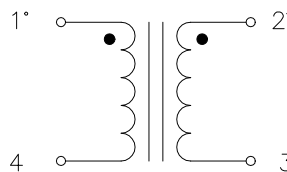
Notes:

- These Chokes are only supplied in full packed reel with 1600pcs
- MSL = Moisture Sensitivity Level =1

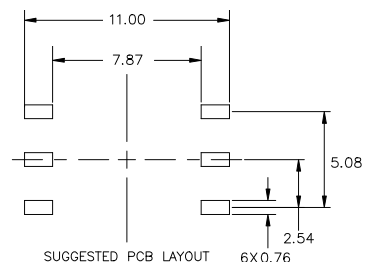
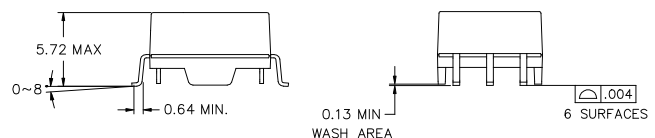
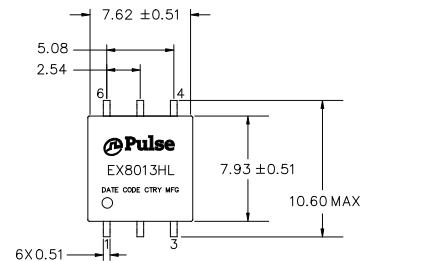
SHASTA - EX8011/2HL



OPHD - EX8013/4HL



SCHEMATICS



Dimensions: mm

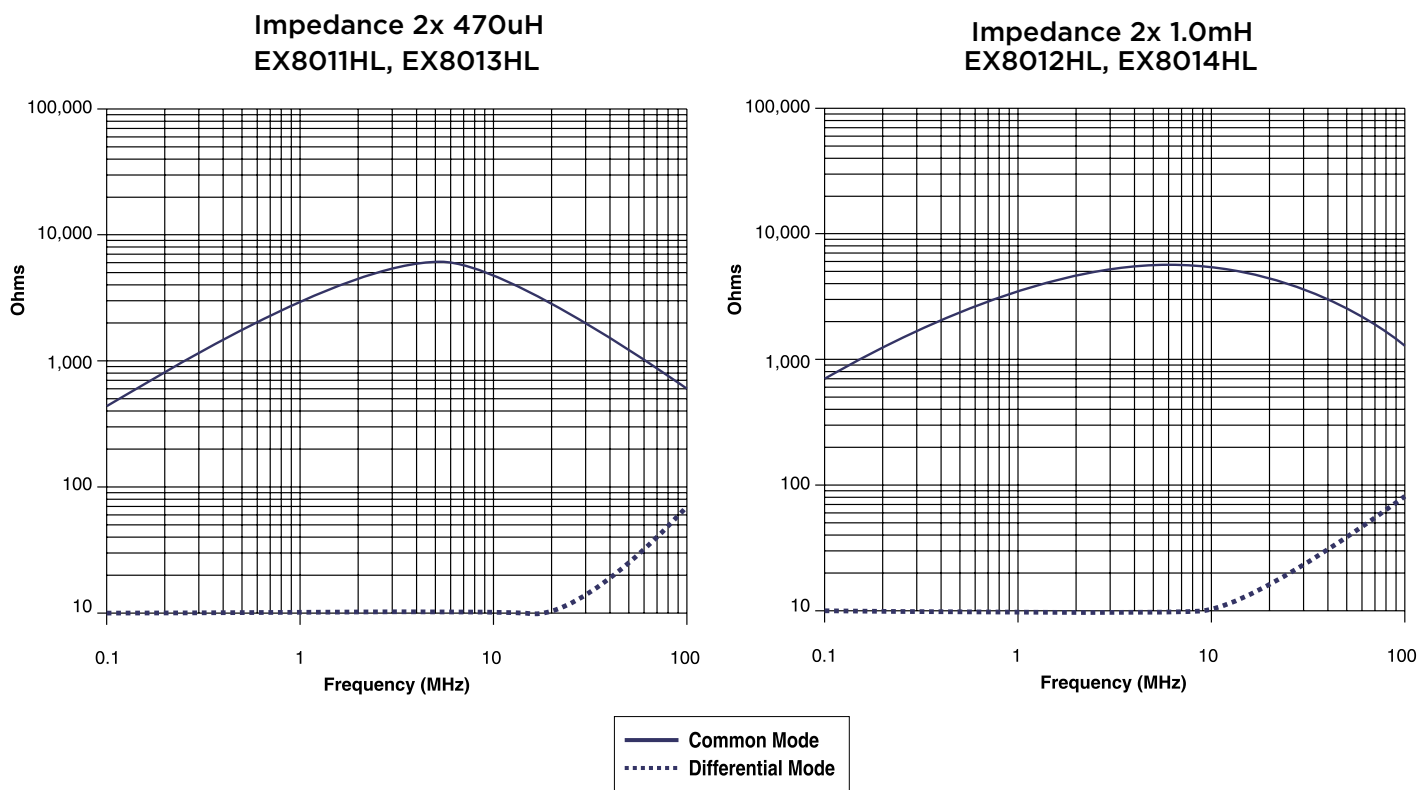
Unless otherwise specified, all tolerances are ± 0.25

Weight 0.20 grams
 Tape & Reel 1600/reel

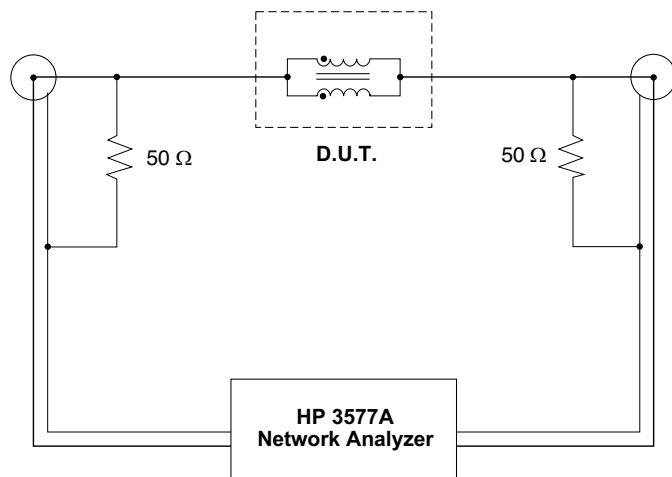
Single Pair Ethernet Surface Mount 2-Wire Common Mode Chokes

Suited for 10Base-T1 ethernet LAN and WAN Applications

COMMON AND DIFFERENTIAL MODE PERFORMANCE CURVES



COMMON MODE TEST CIRCUIT FOR SURFACE MOUNT AND THROUGH HOLE



Test Notes:

1. Network analyzer calibrated to compensate for 50 Ω resistors.
2. All windings on a core are connected in parallel for the test.
3. For multi-core chokes, test data is for one core only. The windings on the other core(s) are left unconnected (i.e. open).

For More Information:

Americas - prodinfo@networkamericas@yageo.com | Europe - prodinfo@networkemea@yageo.com | Asia - prodinfo@networkapac@yageo.com

Performance warranty of products offered on this data sheet is limited to the parameters specified. Data is subject to change without notice. Other brand and product names mentioned herein may be trademarks or registered trademarks of their respective owners. © Copyright, 2022. Pulse Electronics, Inc. All rights reserved.