

**Features:**

- LTE 4G antenna:
  - 698-960/1710-2700
- Gain 2 / 5 dBi
- Diameter 100mm
- Height 34.8mm
- Cable RG174
- Connector SMA male
- IP67

**Applications:**

- 4G LTE
- Cat M1 and Cat 1 Devices
- 2G / 3G radios
- Vehicular use
- Utility boxes
- Smart metering

All dimensions are in mm / inches

Issue: 2041

In the effort to improve our products, we reserve the right to make changes judged to be necessary.

CONFIDENTIAL AND PROPRIETARY INFORMATION

This document contains confidential and proprietary information of Pulse Electronics, Inc. (Pulse) and is protected by copyright, trade secret and other state and federal laws. Its receipt or possession does not convey any rights to reproduce, disclose its contents, or to manufacture, use or sell anything it may describe. Reproduction, disclosure or use without specific written authorization of Pulse is strictly forbidden.

For more information:

Pulse Worldwide Headquarters  
15255 Innovation Drive #100  
San Diego, CA 92128  
USA  
Tel: 1-858-674-8100

Pulse/Larsen Antennas  
18110 SE 34<sup>th</sup> St Bldg 2 Suite 250  
Vancouver, WA 98683  
USA  
Tel: 1-360-944-7551

Europe Headquarters  
Pulse GmbH & Do, KG  
Zeppelinstrasse 15  
Herrenberg, Germany  
Tel: 49 7032 7806 0

Pulse (Suzhou) Wireless Products Co, Inc.  
99 Huo Ju Road(#29 Bldg,4<sup>th</sup> Phase  
Suzhou New District  
Jiangsu Province, Suzhou 215009 PR China  
Tel: 86 512 6807 9998

Preliminary



**ELECTRICAL SPECIFICATIONS**

Antenna Type	PIFA
Frequency	698-960/1710-2700MHz
Nominal Impedance	50 $\Omega$
Return Loss	698-960 -6dB/1710-2700 -8dB
Radiation Pattern	Omni
Gain (Min)	698-960 2dBi / 1710-2700 5dBi
Efficiency(Min)	698-960 38%/ 1710-2700 50%
Polarization	Linear Vertical

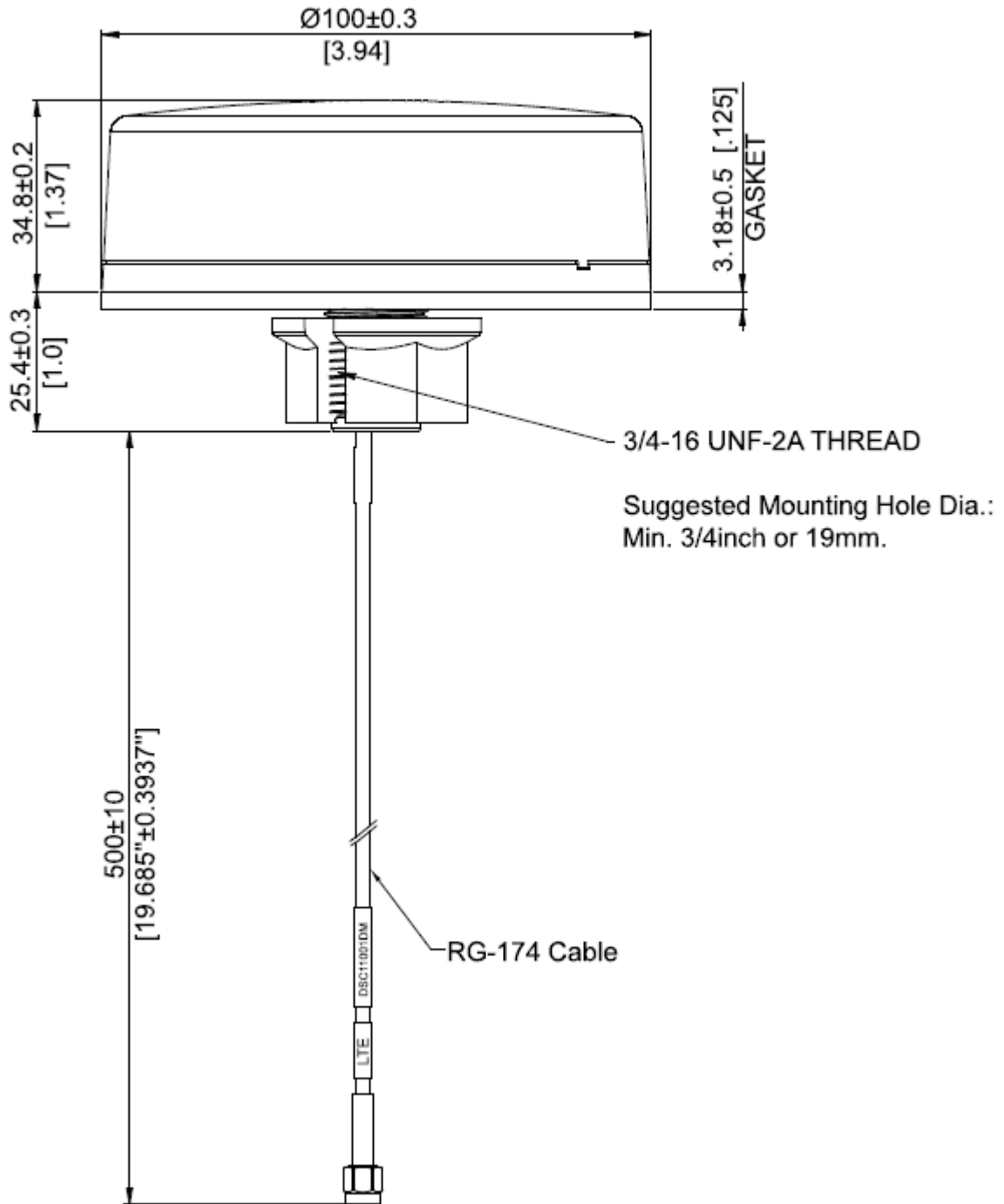
**MECHANICAL SPECIFICATIONS**

Antenna Color / Material	Black
Connector type	SMA Male
Cable type	RG-174, Black
Cable length	500mm
Fixing system	Direct Mount
Connector retention	30 N
Strain relief	30 N, applied to cable along axis and perpendicular to cable entry

**ENVIRONMENTAL SPECIFICATIONS**

Operating Temperature	-40 ~ 85° C
Storage Temperature	-40 ~ 85° C
Ingress Protection	IP67
Wind-loading	160 km/h
RoHS Compliant	Yes

## MECHANICAL DRAWING

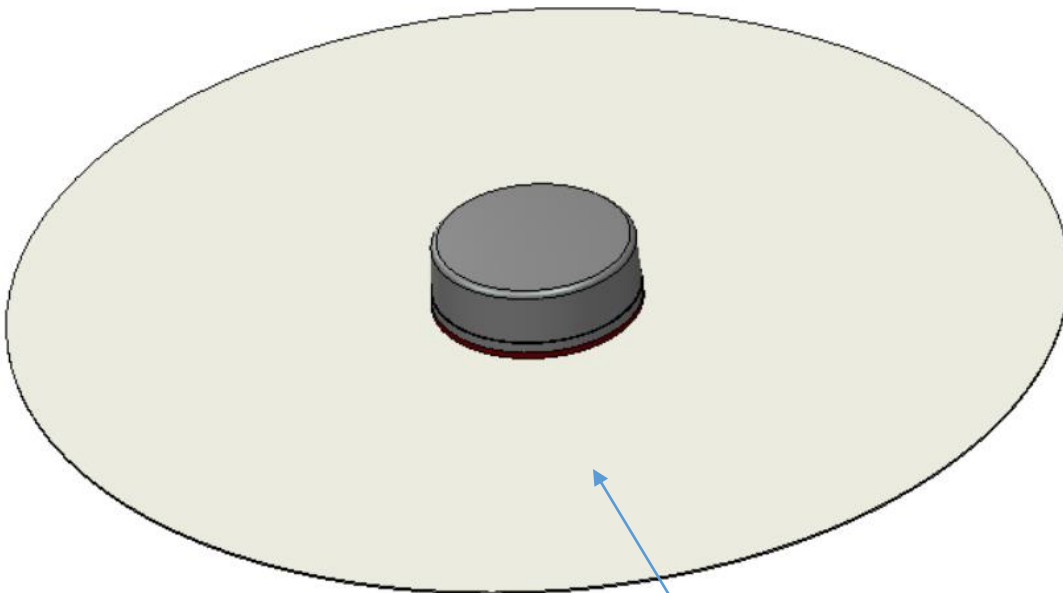


Issue: 2041

In the effort to improve our products, we reserve the right to make changes judged to be necessary.

CONFIDENTIAL AND PROPRIETARY INFORMATION

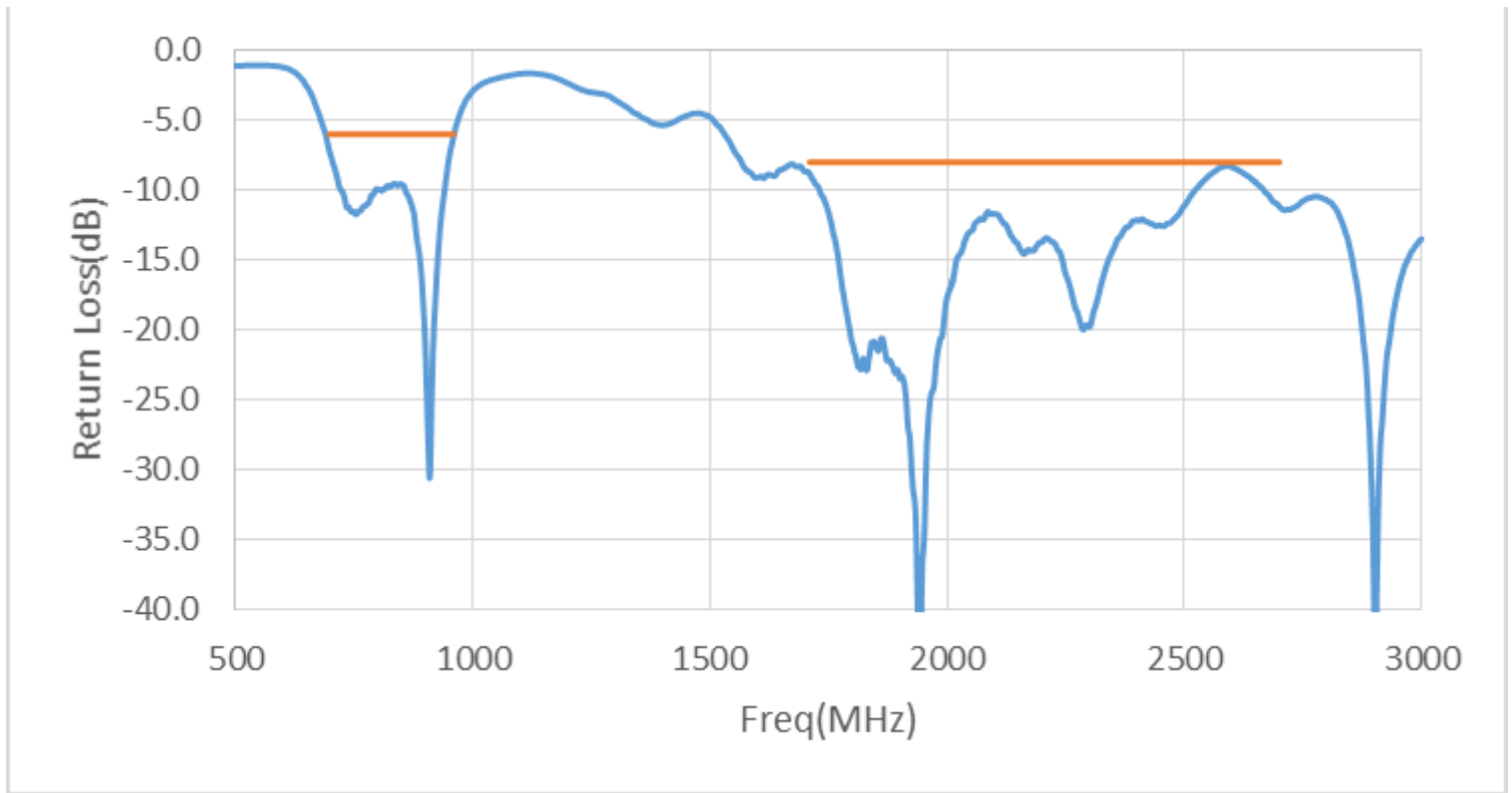
This document contains confidential and proprietary information of Pulse Electronics, Inc. (Pulse) and is protected by copyright, trade secret and other state and federal laws. Its receipt or possession does not convey any rights to reproduce, disclose its contents, or to manufacture, use or sell anything it may describe. Reproduction, disclosure or use without specific written authorization of Pulse is strictly forbidden.

**TEST SETUP**

Diameter: 500 mm ground pane

## CHARTS

### Return Loss



All data test with 500mm length cable

Issue: 2041

In the effort to improve our products, we reserve the right to make changes judged to be necessary.

CONFIDENTIAL AND PROPRIETARY INFORMATION

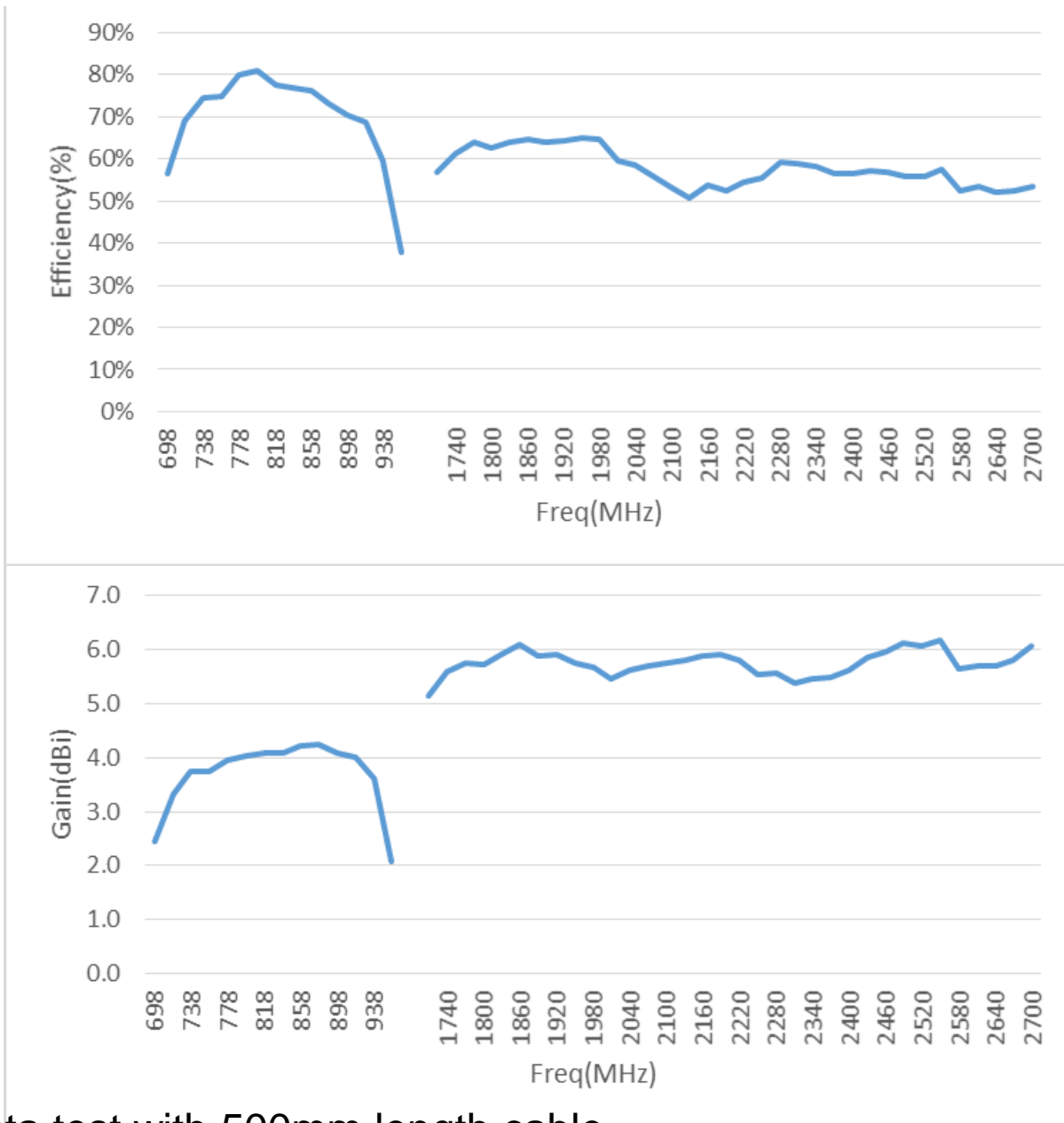
This document contains confidential and proprietary information of Pulse Electronics, Inc. (Pulse) and is protected by copyright, trade secret and other state and federal laws. Its receipt or possession does not convey any rights to reproduce, disclose its contents, or to manufacture, use or sell anything it may describe. Reproduction, disclosure or use without specific written authorization of Pulse is strictly forbidden.

Preliminary



## CHARTS

Gain(dBi) and Efficiency(%)



All data test with 500mm length cable

Preliminary

Issue: 2041

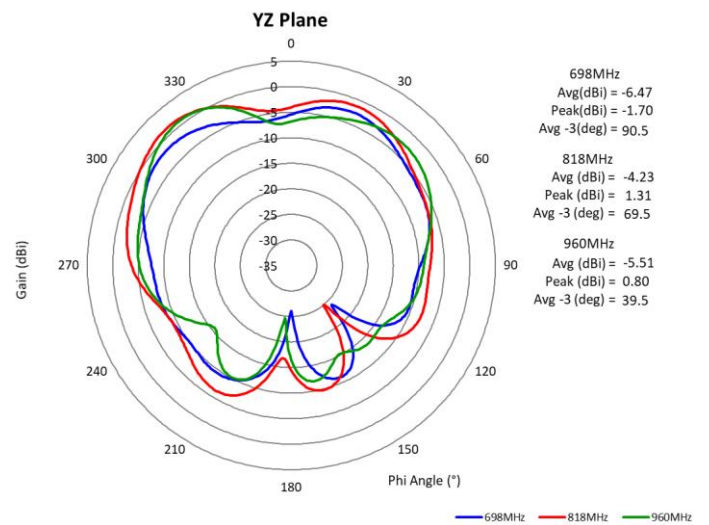
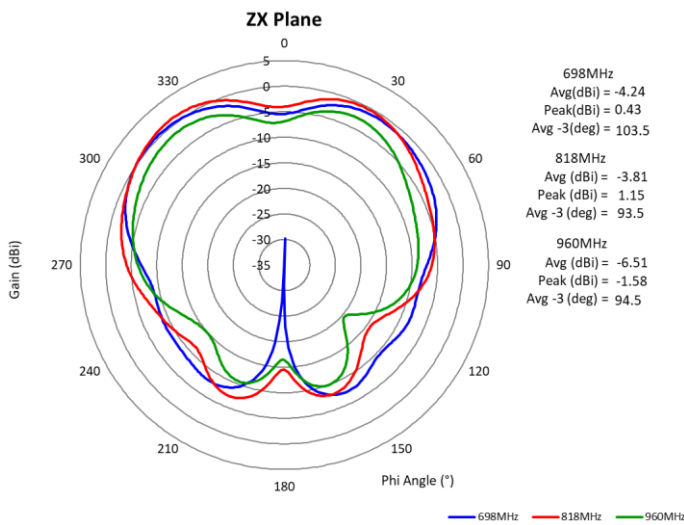
In the effort to improve our products, we reserve the right to make changes judged to be necessary.

CONFIDENTIAL AND PROPRIETARY INFORMATION

This document contains confidential and proprietary information of Pulse Electronics, Inc. (Pulse) and is protected by copyright, trade secret and other state and federal laws. Its receipt or possession does not convey any rights to reproduce, disclose its contents, or to manufacture, use or sell anything it may describe. Reproduction, disclosure or use without specific written authorization of Pulse is strictly forbidden.

## CHARTS

### Radiation Pattern



All data test with 500mm length cable

Issue: 2041

In the effort to improve our products, we reserve the right to make changes judged to be necessary.

CONFIDENTIAL AND PROPRIETARY INFORMATION

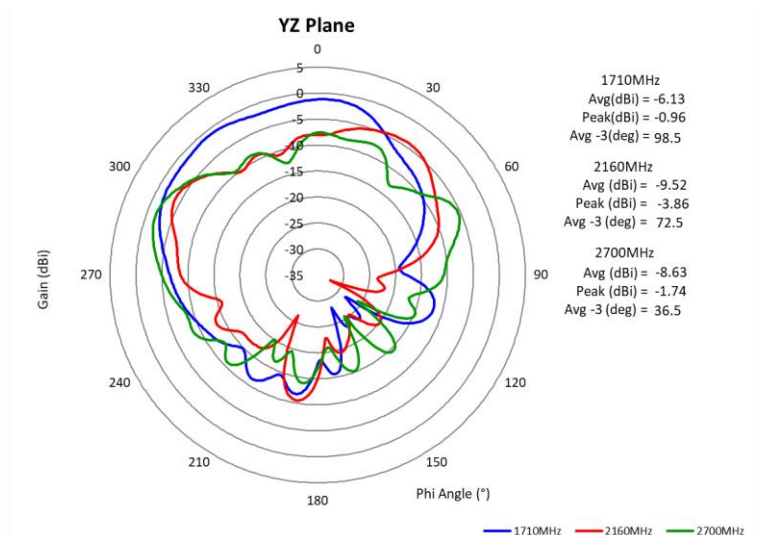
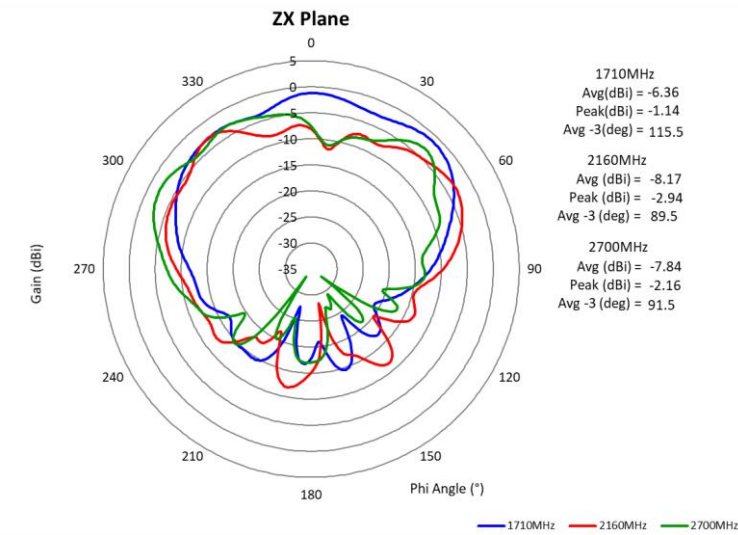
This document contains confidential and proprietary information of Pulse Electronics, Inc. (Pulse) and is protected by copyright, trade secret and other state and federal laws. Its receipt or possession does not convey any rights to reproduce, disclose its contents, or to manufacture, use or sell anything it may describe. Reproduction, disclosure or use without specific written authorization of Pulse is strictly forbidden.

Preliminary



## CHARTS

### Radiation Pattern



All data test with 500mm length cable

Issue: 2041

In the effort to improve our products, we reserve the right to make changes judged to be necessary.

CONFIDENTIAL AND PROPRIETARY INFORMATION

This document contains confidential and proprietary information of Pulse Electronics, Inc. (Pulse) and is protected by copyright, trade secret and other state and federal laws. Its receipt or possession does not convey any rights to reproduce, disclose its contents, or to manufacture, use or sell anything it may describe. Reproduction, disclosure or use without specific written authorization of Pulse is strictly forbidden.

Preliminary



Description : LTE Direct Mount

Series: DISC

**PART NUMBER: DSC11001DM****PACKAGING**

1 antenna packed in a foam bag

12 foam bags of antennas packed in a carton

1 label on each carton with part number, description, date code.